



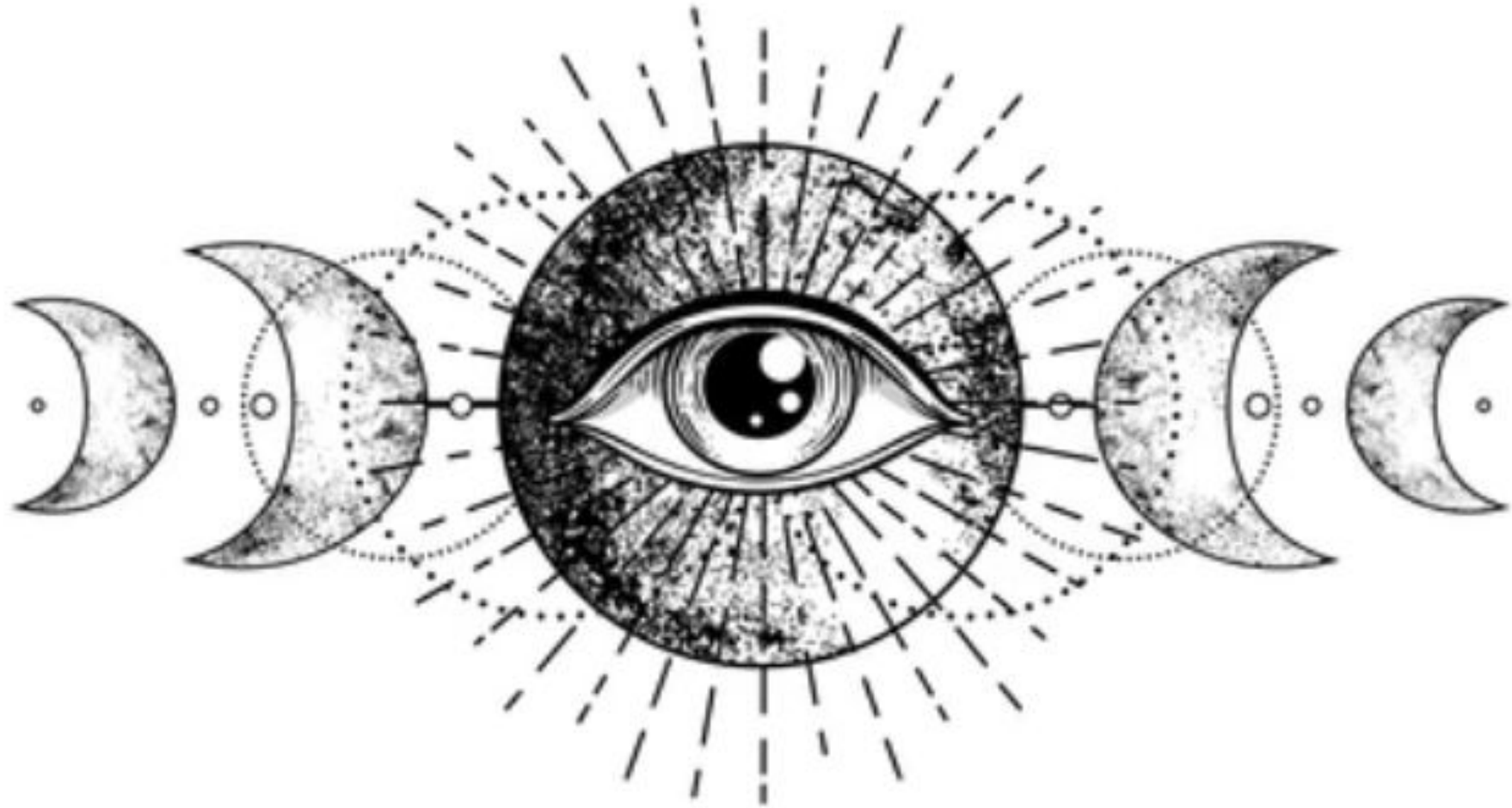
Red Hat Insights

for Red Hat Enterprise Linux

RHUG Edition

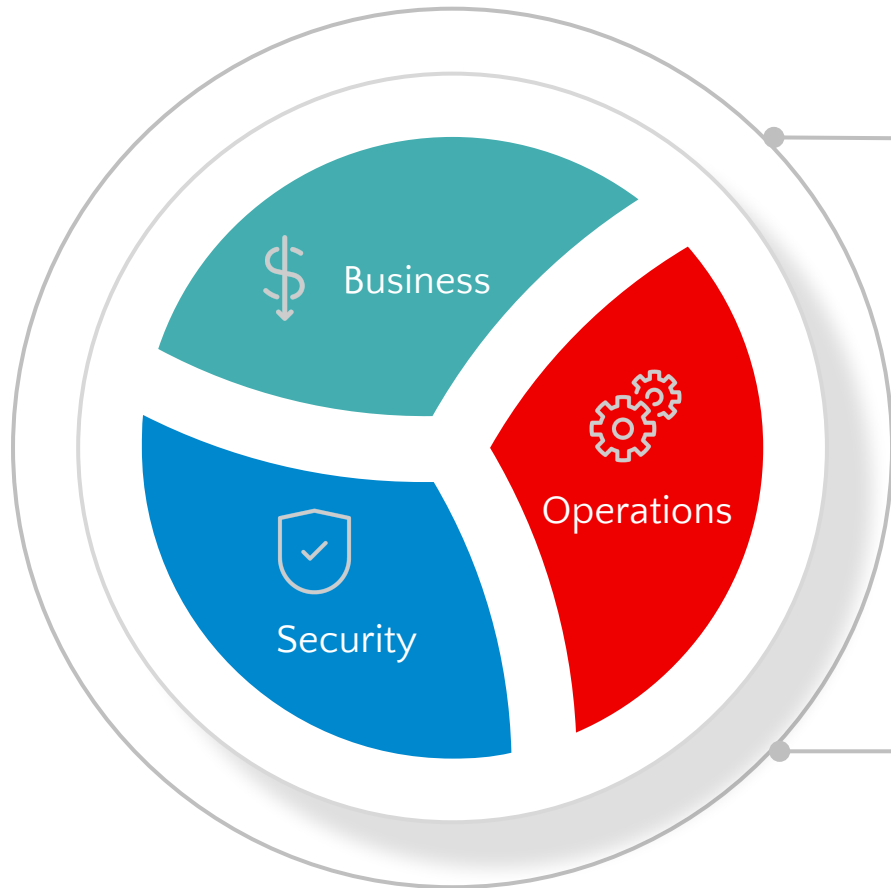
Alan Patrick
Solution Architect
alpatric@redhat.com








Red Hat Insights



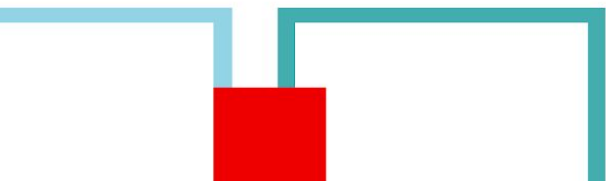
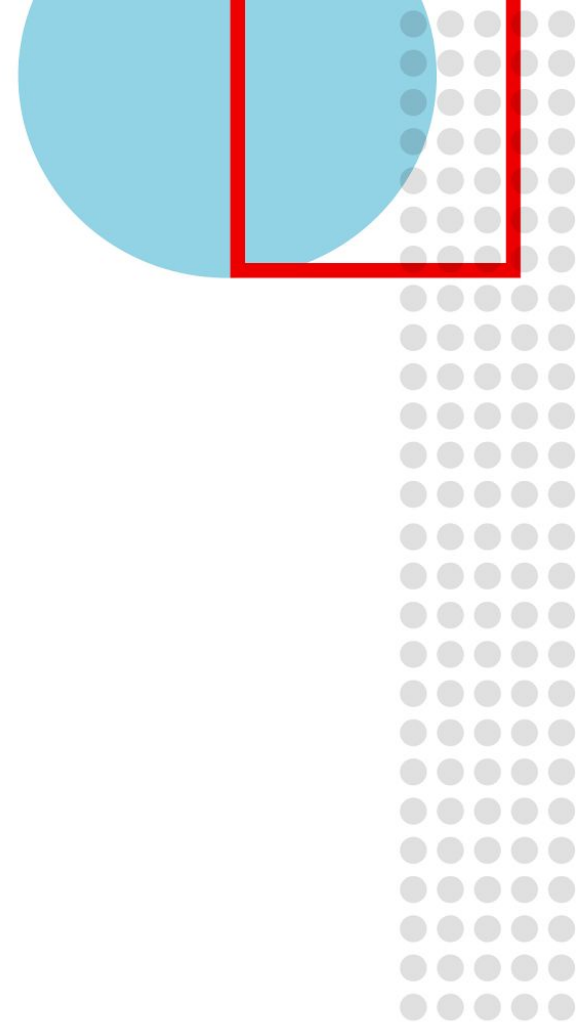
 Track and optimize spend

 Operations
Improve stability and performance

 Security
Reduce vulnerability and compliance risks

Find and prioritize meaningful insights from your data so you can proactively take action.

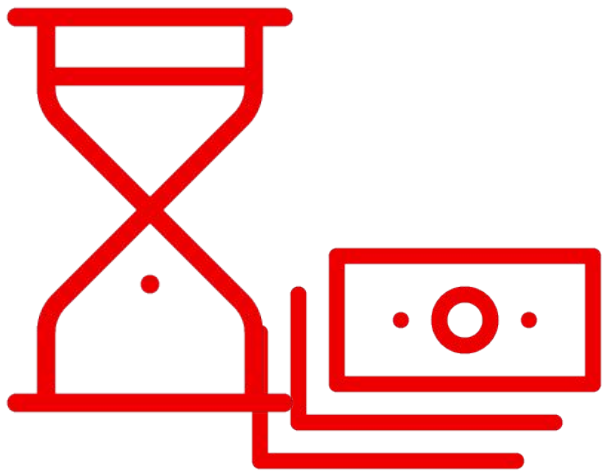
But, What's It Gonna Cost Me?



How Insights Helps You

How much downtime can you afford?

What is the opportunity cost of your firefighting?



**40% of enterprises say
hourly downtime costs
top \$1 Million**

98% of firms report costs of
\$100,000 per hour or more

Why Red Hat Insights?

Operational Efficiency



**Comprehensive analysis
with Red Hat expertise**



**Continuous
vulnerability alerts**



**Increased visibility
to security risks**



**Simple
remediation**

Single, consistent management solution across on-premise, hybrid cloud, and public cloud.

Security Risk Management

Insights is included

with your Red Hat Enterprise Linux subscription.

Buy



Red Hat
Enterprise Linux

Get



Red Hat
Insights

for Red Hat Enterprise Linux

Add



Red Hat
Smart Management

Advanced management capabilities at scale available
with optional subscription

Modernized management with analytics and automation

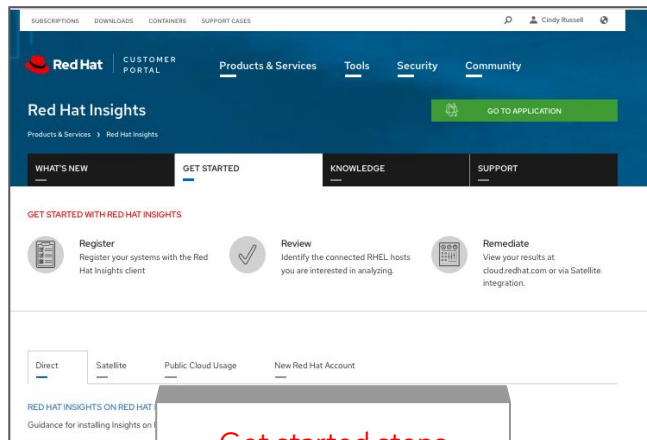


- 96% reduction in time to **detect** known risks to availability, performance, stability, and security
- 26% reduction in administrator steps to **detect** these known risks
- 88% less time to track **patch** status for all systems in environment, versus manual scripted workflow
- 1m 24s to **discover** vulnerabilities in a 100-VM environment, versus over 15m when performed manually
- 91% less task completion time to **address** a vulnerability
- 69% reduction in time to detect a **policy** violation

Three steps to advanced RHEL management

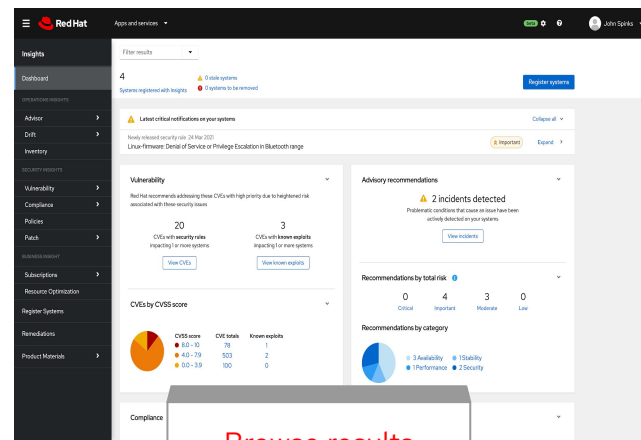
Register

Install client for Red Hat instances on-premises, virtual, cloud.



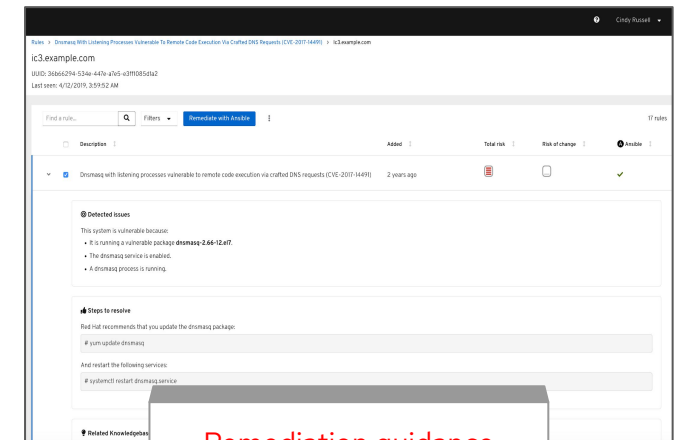
Review

Insights client runs and issues found are reported in the Insights dashboard at cloud.redhat.com



Remediate

Review issues and results in the dashboard and choose which you would like to remediate. Leverage guidance, and remediation options.



What kind of information will
Insights for Red Hat Enterprise
Linux give me?

Insights

Dashboard

OPERATIONS INSIGHTS

Advisor

Drift

Inventory

SECURITY INSIGHTS

Vulnerability

Compliance

Policies

Patch

BUSINESS INSIGHT

Subscriptions

Resource Optimization

Register Systems

Remediations

Product Materials

Filter results

4

Systems registered with Insights

0 stale systems

0 systems to be removed

Latest critical notifications on your systems

Collapse all

Newly released security rule 24 Mar 2021

Linux-firmware: Denial of Service or Privilege Escalation in Bluetooth range

Important

Expand

Vulnerability

Red Hat recommends addressing these CVEs with high priority due to heightened risk associated with these security issues

20

CVEs with security rules impacting 1 or more systems

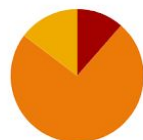
View CVEs

3

CVEs with known exploits impacting 1 or more systems

View known exploits

CVEs by CVSS score



CVSS score

- 8.0 - 10
- 4.0 - 7.9
- 0.0 - 3.9

CVE totals

Known exploits

Advisory recommendations

2 incidents detected

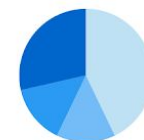
Problematic conditions that cause an issue have been actively detected on your systems

View incidents

Recommendations by total risk

0 Critical 4 Important 3 Moderate 0 Low

Recommendations by category



3 Availability 1 Stability
1 Performance 2 Security

Compliance

No policies

Remediations

- Helps you avoid unplanned downtime
- Recommendations to improve availability, performance, and stability issues that you may not be aware of.
- Gives you step-by-step resolution and Ansible playbooks

OPERATIONS INSIGHTS

Advisor ▾

Recommendations

Systems

Topics

Drift >

Inventory

SECURITY INSIGHTS

Vulnerability >

Compliance >

Policies

Patch >

BUSINESS INSIGHT

Subscriptions >

Register Systems

Remediations

Product Materials >

Filter results ▾

Advisor recommendations

Name ▾ Filter by name 🔍

1 - 10 of 116 < >

Systems impacted 1 or more ✕ Status Enabled ✕ [Clear filters](#)

Name	Added	Total risk	Risk of ch...	Systems	Ansible
> System hangs on the boot when the problematic Intel CPU microcode is used by the Intel Skylake or Cascade Lake CPU	3 days ago	Important	Very Low	2	✓
> Yum and Subscription Manager commands will fail because the identity certificate has expired	24 days ago	Important	Very Low	1	No
> Incident The metadata of LVM will be out of sync with other members of the cluster when lvmad is enabled or running with LVM resources configured and running on the other node	24 days ago	Important	Low	2	✓

Insights

Dashboard

OPERATIONS INSIGHTS

Advisor >

Drift >

Image Builder

Inventory

SECURITY INSIGHTS

Vulnerability ▾

CVEs

Reports

Systems

Compliance >

Policies

Patch >

BUSINESS INSIGHT

Subscriptions >

Register Systems

Filter results ▾

CVEs

▾
 ▾
 Filter by Known exp... ▾

 1 - 17 of 17 ▾ < >

1 or more ✕
 Has a known exploit ✕

	CVE ID ↑	Publish date ↓	Severity ↑	CVSS base score ↑	Systems exposed ↑	Business risk ↑	Status ↑	
>	<input type="checkbox"/> CVE-2021-3156 Known exploit Security rule	26 Jan 2021	Important	7.8	118	Not defined	Not reviewed	⋮
>	<input type="checkbox"/> CVE-2020-9850 Known exploit	09 July 2020	Moderate	9.8	30	Not defined	Not reviewed	⋮
>	<input type="checkbox"/> CVE-2019-13272 Known exploit Security rule	15 July 2019	Important	7.8	4	Not defined	Not reviewed	⋮
>	<input type="checkbox"/> CVE-2019-9213 Known exploit	26 Feb 2019	Important	5.5	5	Not defined	Not reviewed	⋮
>	<input type="checkbox"/> CVE-2018-17456 Known exploit	04 Oct 2018	Important	8.8	1	Not defined	Not reviewed	⋮
>	<input type="checkbox"/> CVE-2018-16509 Known exploit	20 Aug 2018	Important	7.3	2	Not defined	Not reviewed	⋮
>	<input type="checkbox"/> CVE-2018-1111 Known exploit	15 May 2018	Critical	7.5	4	Not defined	Not reviewed	⋮

- Simple to see what CVEs are impacting your hosts so you can prioritize what gets fixed
- Visibility into threat intelligence including publicly known exploits
- Helps you address CVEs with pre-built playbooks

- Advisor
- Drift
- Inventory
- SECURITY INSIGHTS
- Vulnerability
- Compliance
- Policies
- Patch
- BUSINESS INSIGHT
- Subscriptions
 - All RHEL
 - ARM
 - IBM Power
 - IBM Z Systems
 - X86
 - OpenShift Subscriptions
 - Subscriptions Documentation
- Register Systems
- Remediations

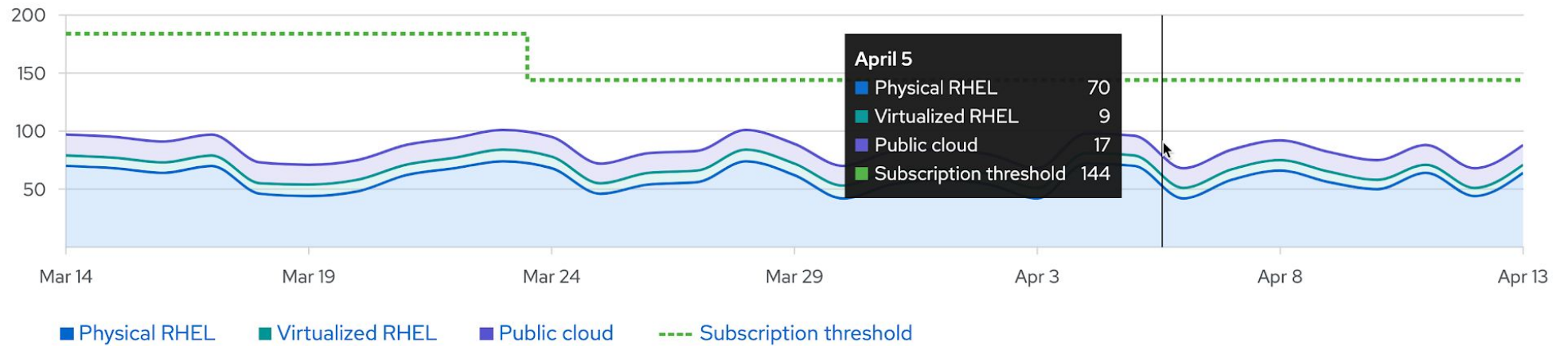
Red Hat Enterprise Linux

Monitor your Red Hat Enterprise Linux usage by physical, virtual,

Usage Filter by usage

CPU socket usage

Daily



Current systems

Filter by name

1 - 27 of 27

Name	Type	Subscribed sockets	Last seen
ip-172-17-0-120.auroracloud.com	Virtual	1	11 days ago
azure-2.example.com	Public cloud Azure	1	4 days ago

- Simple to see subscription utilization across your account
 - How much are you consuming?
 - Where are you consuming it?
 - Do you need to buy more?

Feedback

3 ways to fix what Insights finds

With and without Red Hat Smart Management

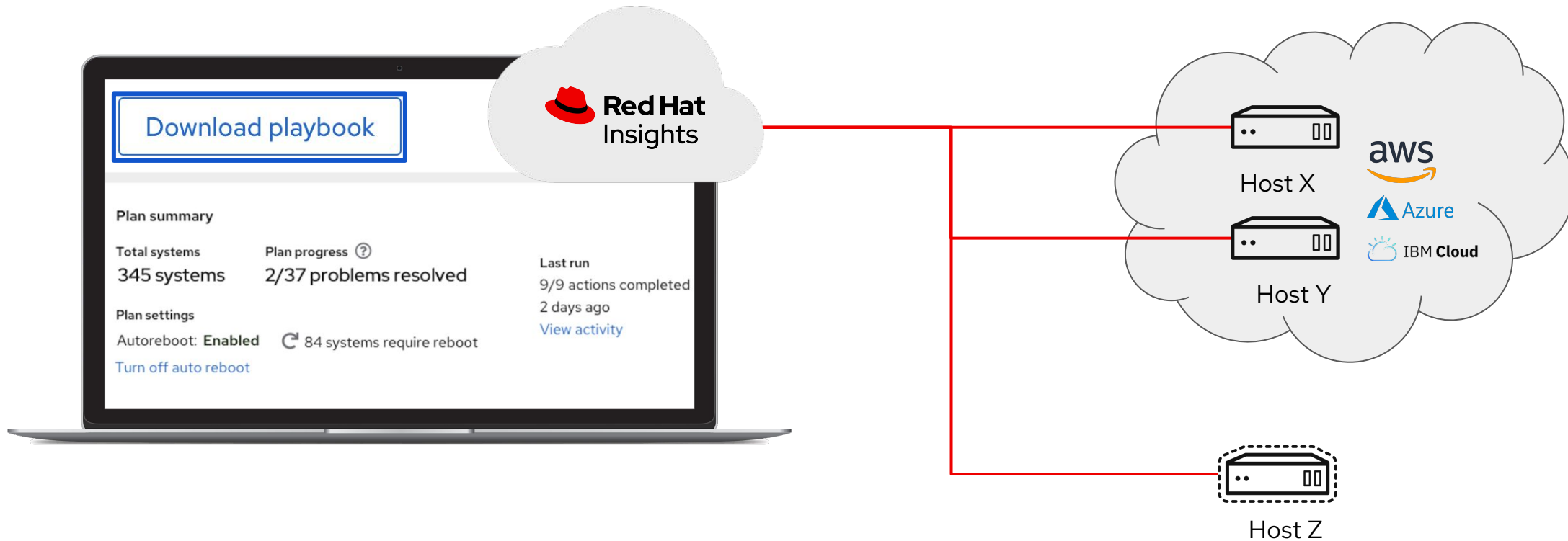
How to fix what Insights finds

3 easy ways to remediate the issues that Insights detects

1. Insights only: Download playbooks and run with Ansible
2. Insights and Smart Management - Remediate via Cloud Connector with Red Hat connector
3. Insights and Smart Management - Remediate via Cloud Connector with Satellite

#1 - Insights standalone

Insights can create a playbook for many common issues that it finds.



Insights

Dashboard

Advisor

Vulnerability

Compliance

Patch

Drift

Policies

Inventory

Remediations

Register Systems

Subscription Watch

Product Materials

Filter results

Remediations > SUDO_Fix

SUDO_Fix

Execute playbook Download playbook



Total systems

20 systems

Autoreboot

Enabled Turn off

Do more with your Find it Fix it capabilities

Configure your systems with Cloud Connector to fix systems across all your Satellite instances.

Learn how to configure

Actions Activity

Dropdown menu with a square icon and a downward arrow.

Search

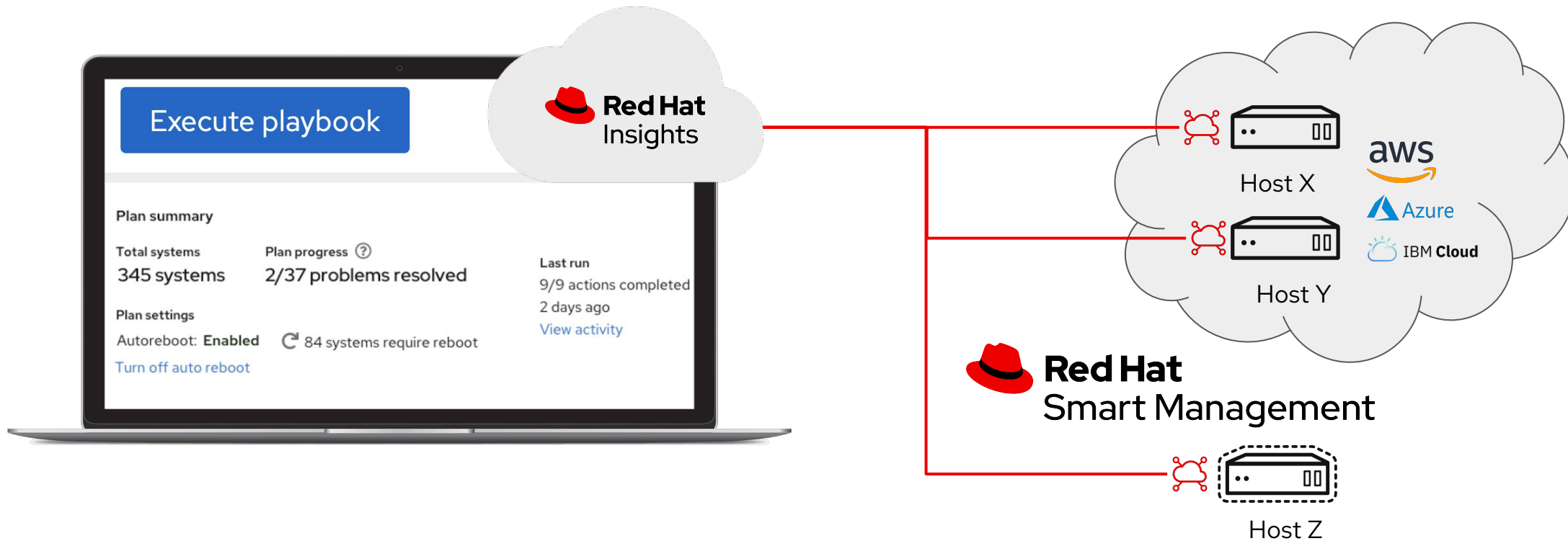


Remove action

1-1 of 1

#2 - Insights and Smart Management

Enable Cloud Connector through Red Hat connector to fix issues that Insights finds*



*Requires use of Red Hat connector - Tech Preview in Red Hat Enterprise Linux 8.4

Dashboard

OPERATIONS INSIGHTS

Advisor

Drift

Image Builder

Inventory

SECURITY INSIGHTS

Vulnerability

Compliance

Policies

Patch

BUSINESS INSIGHT

Subscriptions

Register Systems

Remediations

Product Materials

Filter results

Remediations > SUDO

SUDO_Fix

0/1
Issues resolved

Actions

Search

Actions ↑

CVE_2021_315...
Fix issues caused by...
Edit

Execute playbook



Playbook contains **1 action** affecting **20 systems**.

Systems connected to a Satellite instance and configured with Cloud Connector can be automatically remediated. To remediate other systems, download the Ansible Playbook.

Connection status of systems

Connection type	System count	Connection status
opendemo.usersys.redha...	1	✔ Ready
vm255-93.gsslabs.pnq2.r...	1	✔ Ready
wallsat67.usersys.redh...	1	✔ Ready

Direct connection 9 Cannot remediate - Direct connection.
Connect your systems to Satellite to automatically remediate.
[Learn how to connect](#)

Execute playbook on 3 systems

Download playbook

Execute playbook

Download playbook

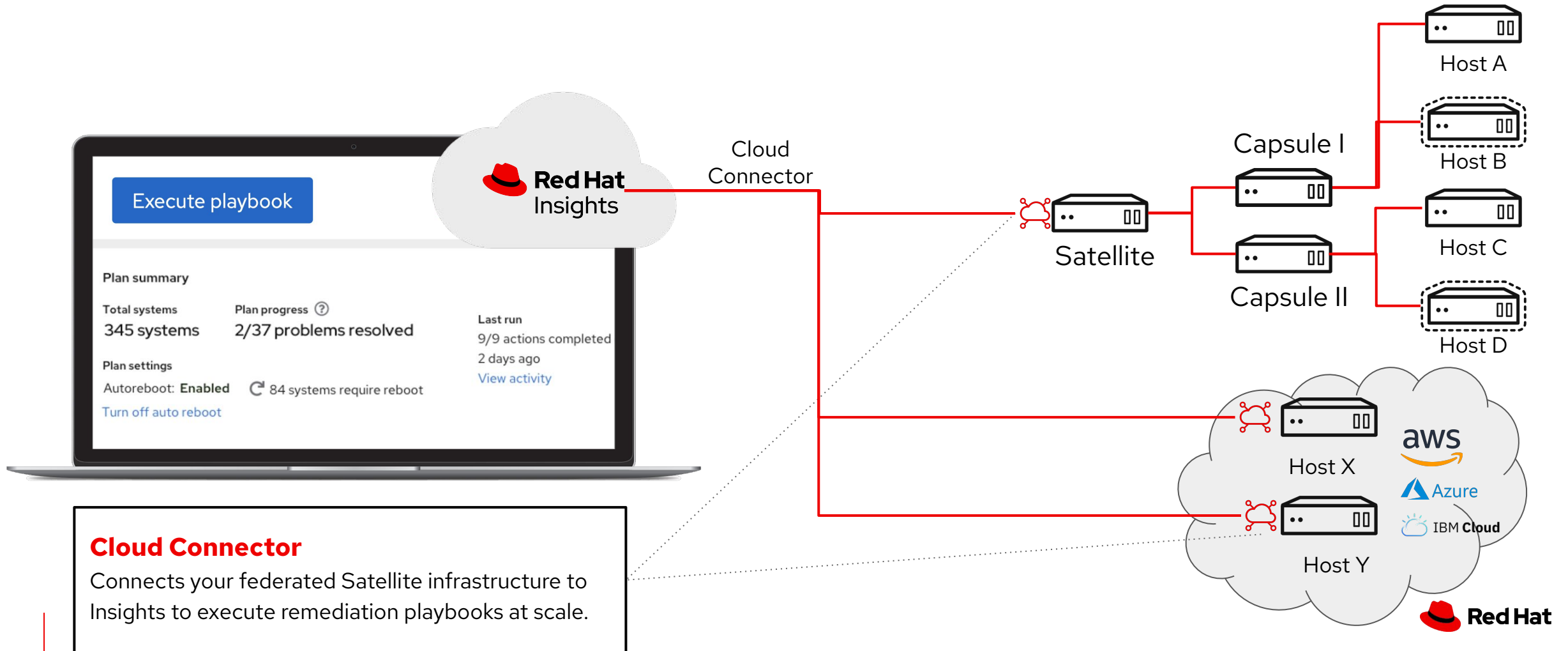
1 - 1 of 1

Type	Status
Vulnerability	11/20 remediated



#3 - Red Hat Smart Management and Cloud Connectivity

Smart Management subscription enables push-button remediation of issues identified by Insights, with and without Satellite



Cloud Connector
Connects your federated Satellite infrastructure to Insights to execute remediation playbooks at scale.

Dashboard

OPERATIONS INSIGHTS

Advisor >

Drift >

Image Builder

Inventory

SECURITY INSIGHTS

Vulnerability >

Compliance >

Policies

Patch >

BUSINESS INSIGHT

Subscriptions >

Register Systems

Remediations

Product Materials >

Filter results

Remediations > SUDO

SUDO_Fix

0/1
Issues resolved

Actions

Search

Actions ↑

CVE_2021_315
Fix issues caused by
Edit

Execute playbook



Playbook contains **1 action** affecting **20 systems**.

Systems connected to a Satellite instance and configured with Cloud Connector can be automatically remediated. To remediate other systems, download the Ansible Playbook.

Connection status of systems

Connection type	Syste...	Connection status
opendemo.usersys.redha...	1	✔ Ready
vm255-93.gsslab.pnq2.r...	1	✔ Ready
wallsat67.usersys.redh...	1	✔ Ready
Satellite 5fbc5298-199...	8	✔ Ready
Direct connection	9	Cannot remediate - Direct connection. Connect your systems to Satellite to automatically remediate. Learn how to connect

Execute playbook on 11 systems

Download playbook

playbook [Download playbook](#)

1 - 1 of 1

Status
11/20 remediated



Feedback

You control the data

Four things you should know about data collection in Insights



It's Granular - And Sortable

**No PIN/PII
(GDPR in Mind!)**

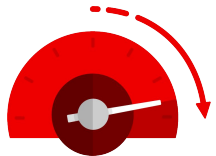
No Raw Logs

**Encrypted from
Source to Service**

More information here: <https://cloud.redhat.com/security/insights>

Red Hat Insights Use Cases

Key use cases



Uptime and efficiency

- Frees time for admins to add value elsewhere
- Consolidate operations teams
- Always forward



Security

- Keep up with vulnerabilities
- Harden infrastructure proactively
- Proactively address CVEs

Insights combines with other tools to enhance the Red Hat Enterprise Linux investment.

Insights + technical account manager (TAM) encourages deeper customer conversations and delivers regular assessments.

Insights + Satellite identifies and prioritizes risks and patches so customers can resolve issues faster

How to configure Red Hat Insights for Red Hat Enterprise Linux

Installation and registration

Simple and Straightforward

Step #1: Run # `yum install insights-client`

- Red Hat Enterprise Linux 8 customers will not need to perform this step - the Insights client is pre-installed.

Step #2: Run # `insights-client --register`

Step #3 See results at cloud.redhat.com and Remediate.

More information including automation playbooks are available at:

- <https://access.redhat.com/insights/getting-started>

Top 3 Insights Concerns

I can't use Software-as-a-Service (SaaS).

Often we find that SaaS is already being used.

Services like Salesforce, ServiceNow, and New Relic are often deployed as SaaS.

Hostname / IP are sensitive, and we are concerned about sharing information about our systems.

All data is encrypted in transit AND at rest, and you can easily redact that further.

I am located in <LOCATION>, and can't use Insights.

Many regions have restrictions around citizen data storage, e.g., GDPR, but these types of laws are unrelated to the type of data Insights collects.

Top 3 Insights Data Collection Concerns

At a high level, what information does Insights collect?

Red Hat Insights Security Information article:

<https://cloud.redhat.com/security/insights>

How can my Security team review the actual Insights collection?

Generate a collection and inspect it in detail. Follow instructions in this article:

System Information Collected by Red Hat Insights

<https://red.ht/2yPIWsH>

How can I redact information from the Insights collection?

See article on Obfuscating IP Addresses and Host Names in Red Hat Insights

<https://red.ht/2KebCgB>

For more complicated redaction, refer to the: Use a YAML-style denylist Knowledgebase article:

<https://red.ht/36lo6gB>

Resources & Next Steps

Red Hat Insights:

Additional resources and next steps

Already a Red Hat Enterprise Linux user?

You have Red Hat Insights at no additional cost:

https://red.ht/insights_start

Would you like to learn more about Red Hat Insights?

<https://redhat.com/insights>

For more info, visit: <https://access.redhat.com/insights/info>

Refer to the Insights webinar library

Replays and upcoming webinars from this series

bit.ly/insights_webinarlibrary



▶ Watch the [intro video](#).



▶ Read the [Insights blog](#).

Thank you

Red Hat is the world's leading provider of enterprise open source software solutions. Award-winning support, training, and consulting services make Red Hat a trusted adviser to the Fortune 500.



[linkedin.com/company/red-hat](https://www.linkedin.com/company/red-hat)



[youtube.com/user/RedHatVideos](https://www.youtube.com/user/RedHatVideos)



[facebook.com/redhatinc](https://www.facebook.com/redhatinc)



twitter.com/RedHat

Agenda

- How Insights Helps You
- What kind of information will Insights for Red Hat Enterprise Linux give me?
- 3 ways to fix what Insights finds (with and without Smart Management)
- You control the data
- Insights Use Cases
- What's New in Red Hat Insights
- Insights Services
- Insights Customers
- How to Configure Red Hat Insights
- Common Questions
- Resource and Next Steps